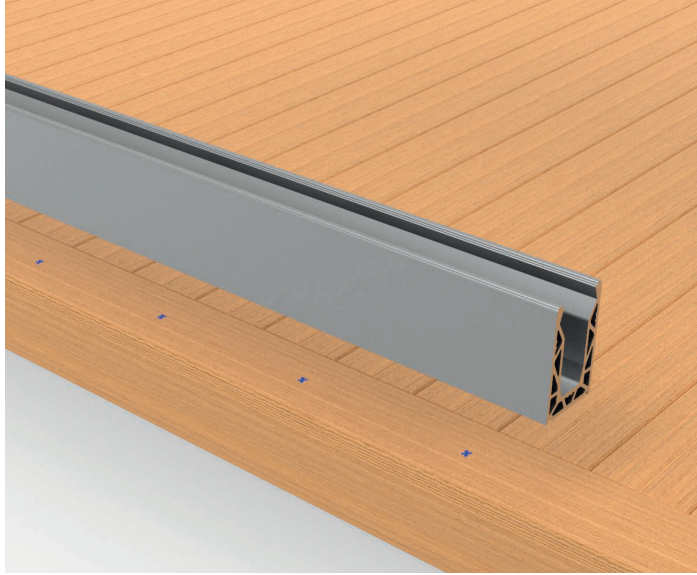


INSTALLATION GUIDE

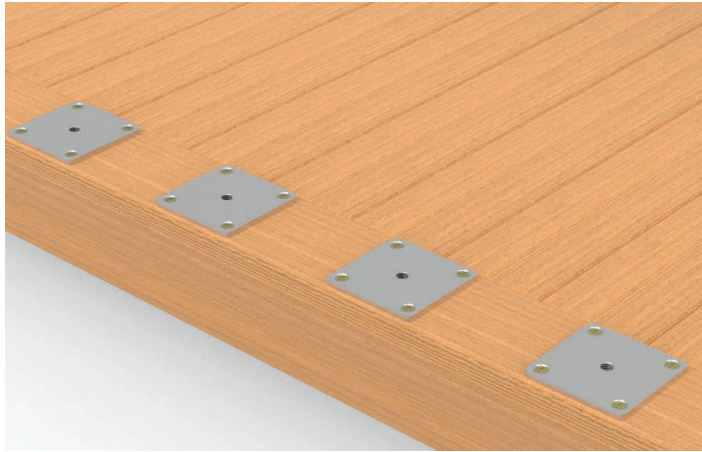


STEP 1

DRILL THE HOLES

The Posi-Glaze base channel should be placed onto its designated position and the channel fixing holes marked onto the substrate for drilling.

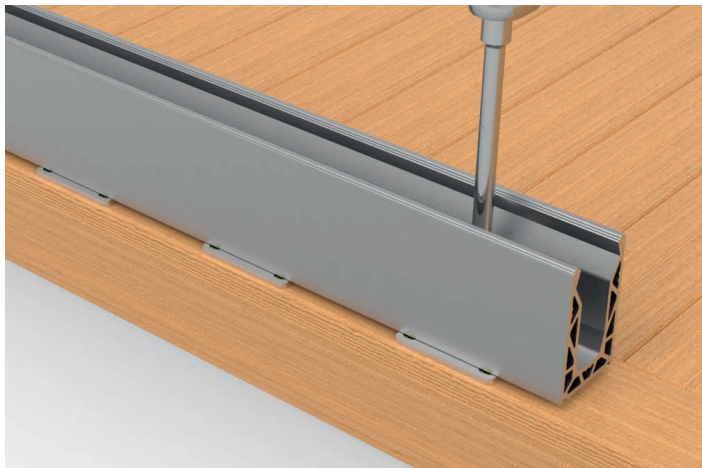
Remove the channel before drilling the holes. Starting with a pilot hole and finally drilling out to 16mm wide and 50 - 60mm deep, the timber fixing plate will be placed in the hole. Ensure all debris is removed before positioning the timber fixing plate.



STEP 2

PLACE THE TIMBER PLATE

Insert the timber fixing plate into the drilled holes and line up so it is flush with the wood. Drill pilot holes for the wood screws using the timber plate as a guide. Attach the timber fixing plate using 4 screws per plate. Screws must be 6mm wide and a minimum of 100mm long.



STEP 3

FIT THE CHANNEL

Place the Posi-Glaze base channel back into position, on top of the timber fixing plates. Ensure all the bolt holes line up correctly before proceeding to fix the channel with M12 bolts. Once in place continue installation as normal.

Whilst every effort has been made to ensure the accuracy of the information supplied. F.H. Brundle cannot be held responsible for any errors or omissions. This product must only be employed for its original intended use. Any other use is wrong and potentially dangerous. Installation must be carried out in full compliance with current regulations. F.H. Brundle cannot be held liable for any damages resulting from wrongful, erroneous or negligent use.