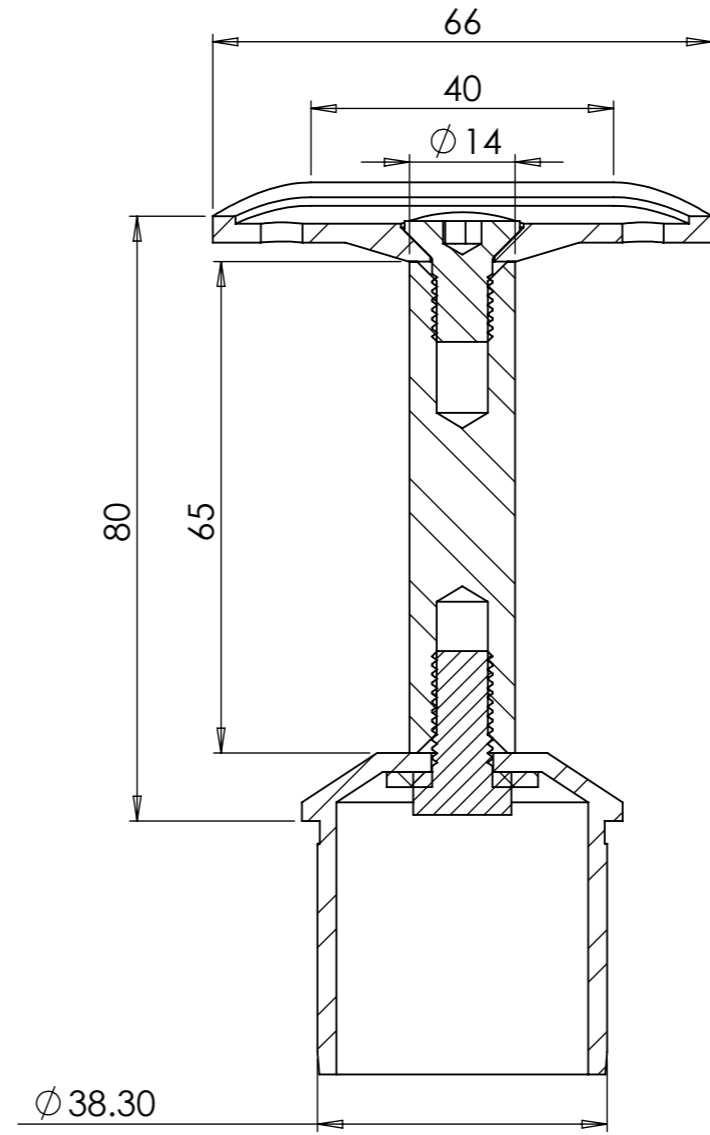
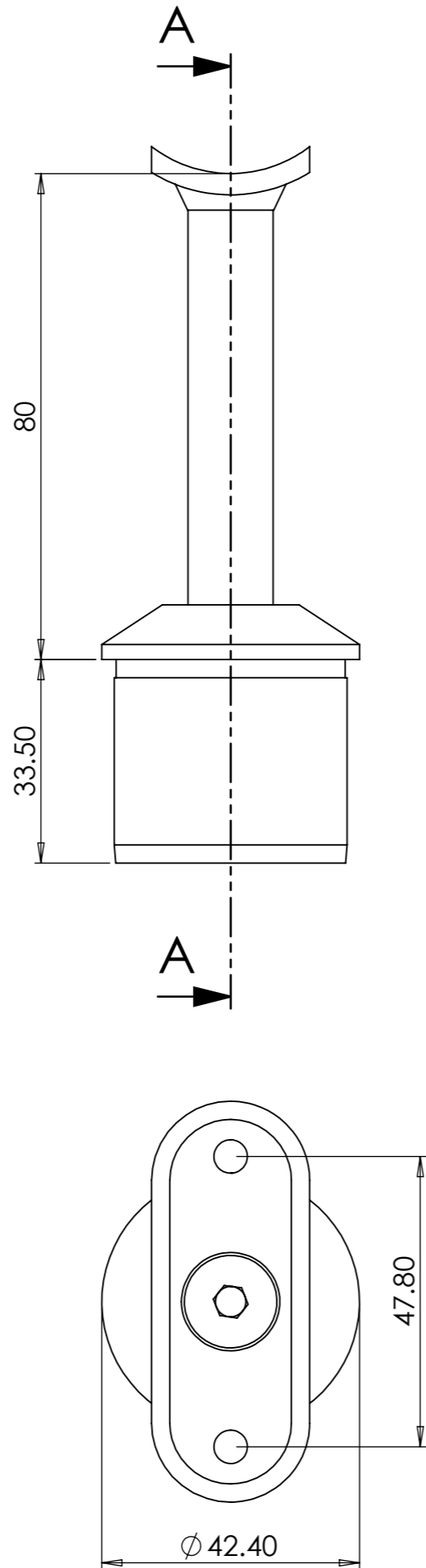
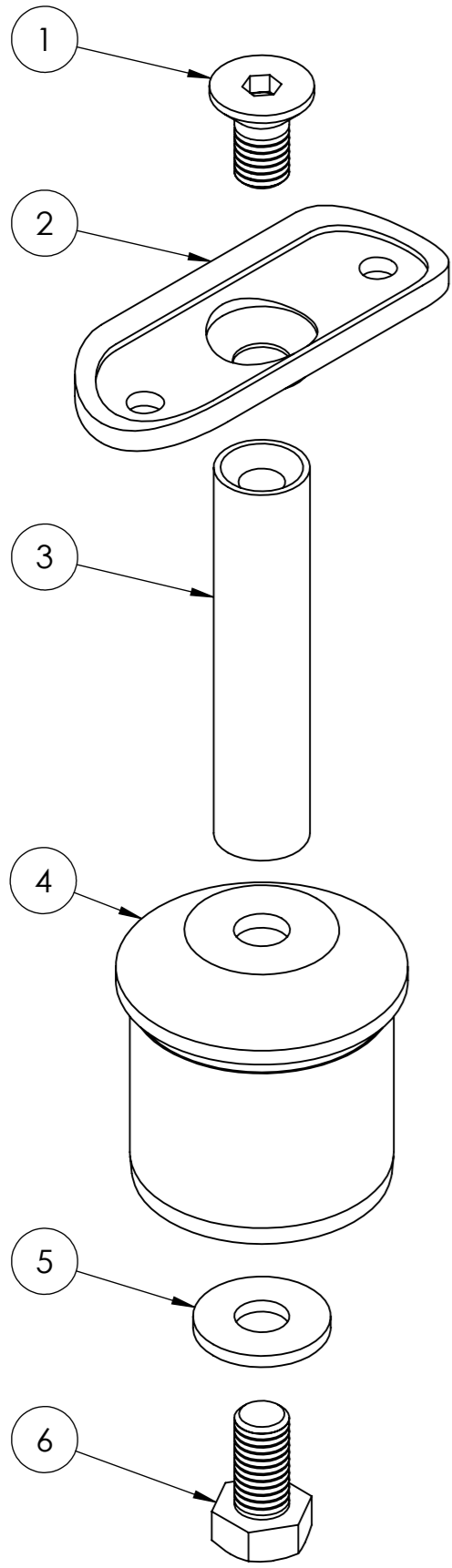
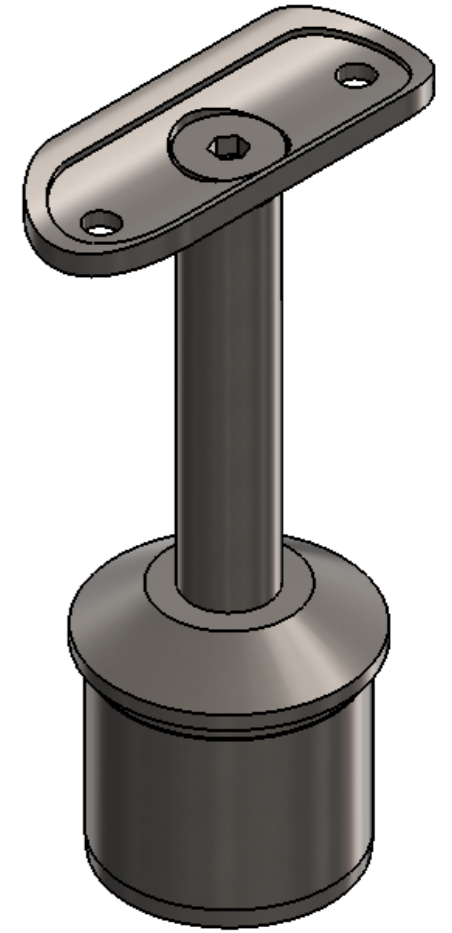


NB: Saddle to Suit 42.4mm (316) Stainless Steel Tube



SECTION A-A
SCALE 1 : 1



ITEM NO.	PART NUMBER	QTY.
1	M8 X 16 Countersunk Hex Head Bolt	1
2	Part - 1806351C	1
3	65 x Ø14 Stem - Threaded Depth 20mm to Suit M8 Fittings	1
4	Part - 1806357C	1
5	Nylon Washer 20 x 2 With Hole For M8 Fittings	1
6	M8 x 16 Hex Head Bolt	1

Search For Drawings Via Part Number
For More Information See Exploded
View & Bill of Materials Table



Pro-Railing
Tel: 0121 565 8282
Email: prorailing@brundle.com
Web: www.prorailing.co.uk

NOTES: Customer Drawing

DESCRIPTION: Handrail Bracket 42.4mm Fix Mounting

PART NO: 1806310CC

DWG NO: NA

A3

UNLESS OTHERWISE SPECIFIED ALL DIMENSIONS ARE IN MILLIMETERS			
NAME	DATE	REVISION	E
DRAWN	GC	23/04/2015	
REV. BY			

MATERIAL: 316 Stainless Steel

FINISH: Stainless Steel

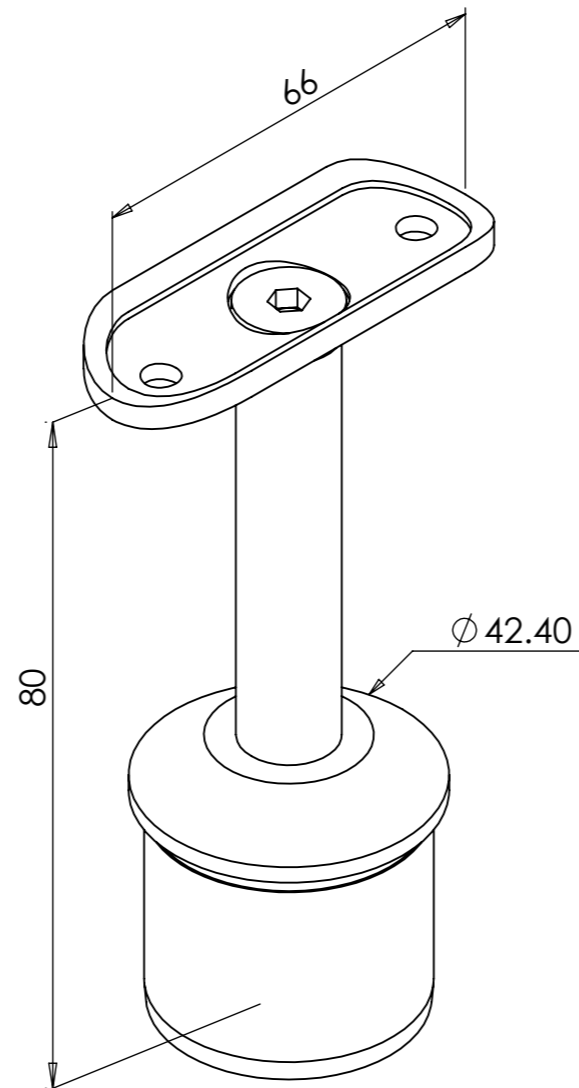
GRIT SIZE: 320

WEIGHT: 0.22 Kg

SCALE:1:2

DO NOT SCALE DRAWING

SHEET 1 OF 2



Pro-Railing
 Tel: 0121 565 8282
 Email: prorailing@brundle.com
 Web: www.prorailing.co.uk

NOTES: Isometric View

DESCRIPTION: Handrail Bracket 42.4mm Fix Mounting



MATERIAL: 316 Stainless Steel

PART NO: 1806310CC

UNLESS OTHERWISE SPECIFIED
 ALL DIMENSIONS ARE IN MILLIMETERS

FINISH: Stainless Steel

	NAME	DATE	REVISION
DRAWN	GC	23/04/2015	E
REV. BY			

GRIT SIZE: 320

DWG NO: NA

WEIGHT: 0.22 Kg

SCALE: 1:1

DO NOT SCALE DRAWING

SHEET 2 OF 2

A3